

# Partnership for Sustainable Development

## - Responsibility from bean to cup

**Eva Eriksson, Director Sustainability**

**DCED Conference**

**Härnösand, June 15, 2016**



**Löfbergs**  
KÄFFEROSTERIER



# Family business since 1906



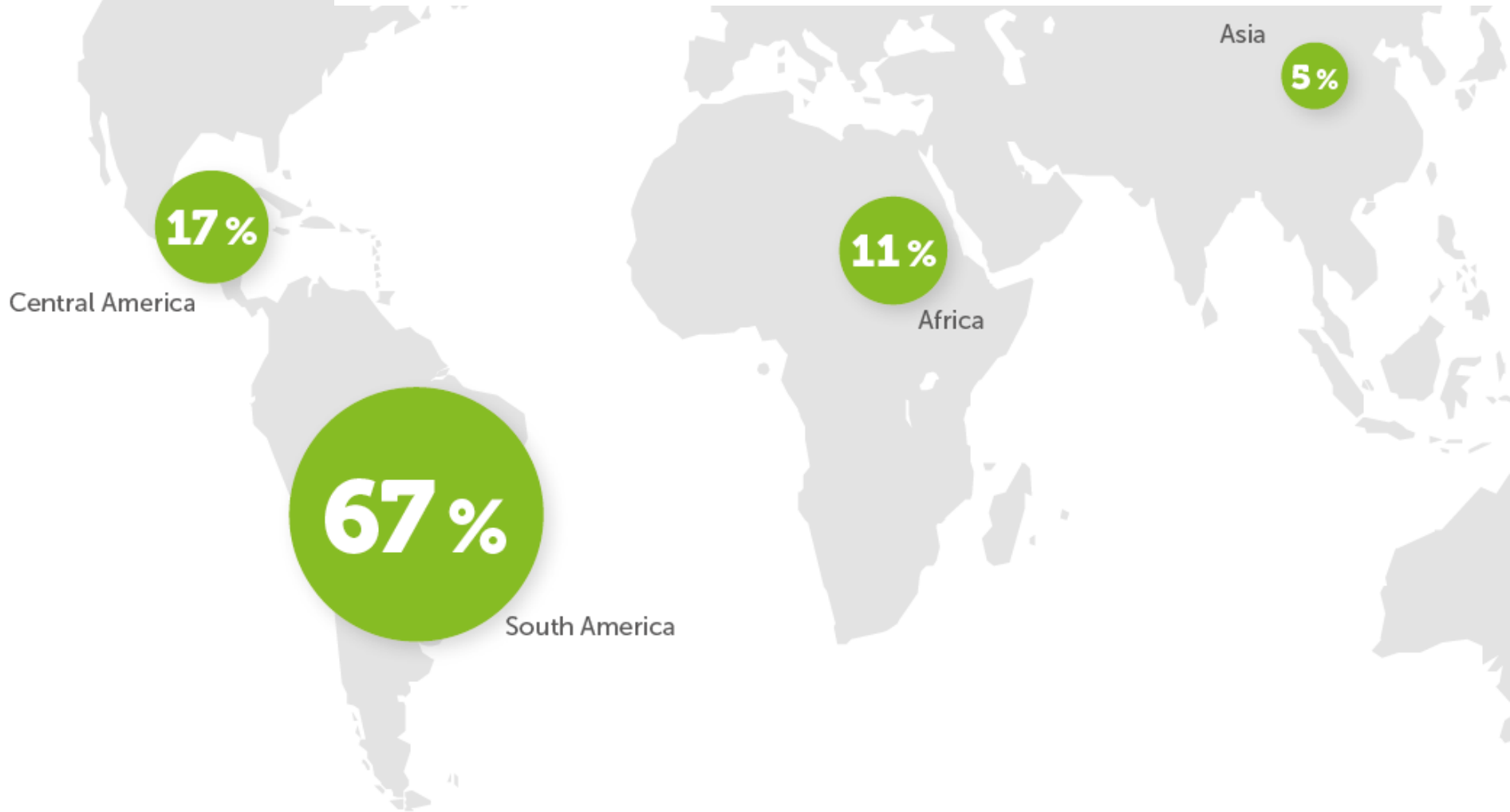
**Löfbergs**  
KÄFFERHÖSTERIET

# From national to international

- Office
- Roasting house
- Our sales



**Sourcing** - 20 countries,  
- 40 000 coffee farmers









Peru Amazonas Ionya grande FTO 120523







Peru Amazonas FTO 120526

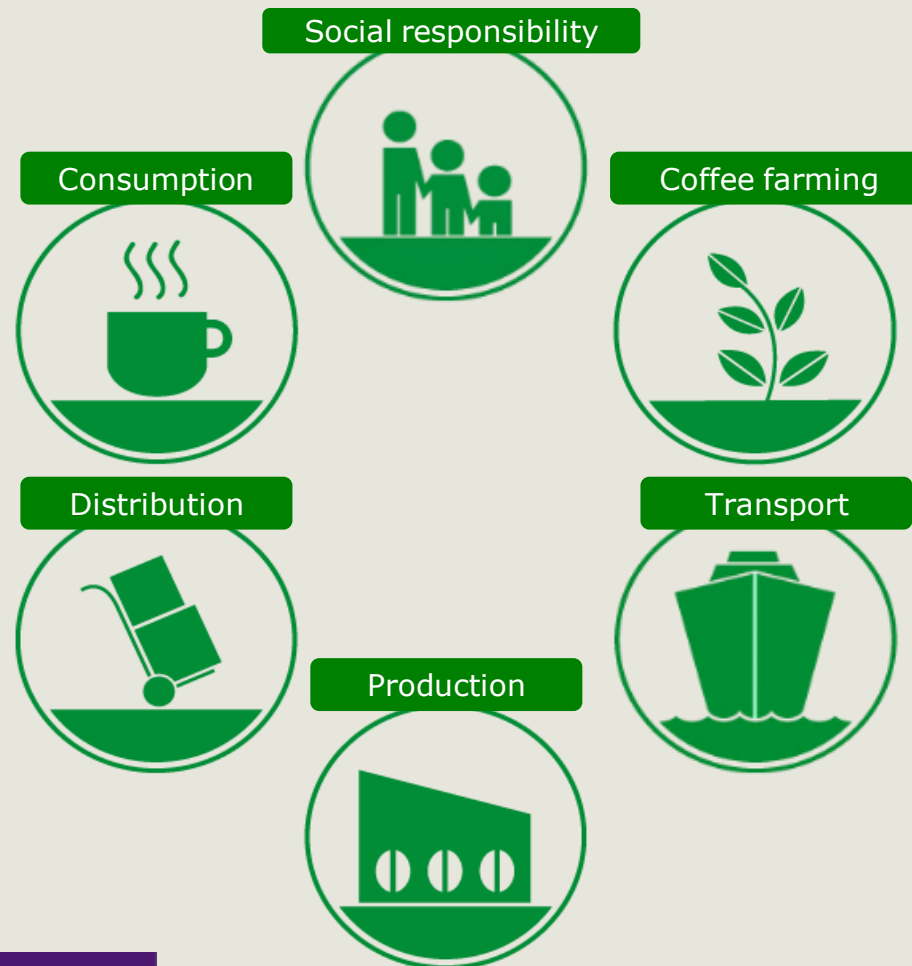




Foto av Martin L  
Honduras **Marcala** FTO 110121



# Responsibility from bean to cup





# The biggest challenges

1. Climate change
2. Next generation of coffee growers





# Goal 100% renewable energy 2020





# Goal 100 % certified coffee 2020



Organic  
1996



Fairtrade  
2000




UTZ  
2008



Rainforest  
Alliance  
2012





## Development projects for small-scale coffee farmers

*Vision to make smallholder coffee farming more competitive and to improve livelihoods for coffee farmers all over the world.*

- > 30 000 Coffee farmers in 12 countries
- Goal 2018: 75 000 farmers



INTERNATIONAL  
**Coffee Partners**



LAVAZZA

Lüfbergs



Paulig





# coffee & climate

enabling effective response



Paulig



Löfbergs



FONDAZIONE  
GIUSEPPE E PERICLE LAZZA ONLUS



giz



ECOM COFFEE



Sida



SUSTAINABLE  
COFFEE  
PROGRAM

Löfbergs  
KÄFFERHÖSTERIET



CONSERVATION  
INTERNATIONAL



# Tanzania – 24-26 nov 2015



INTERNATIONAL  
**Coffee Partners**

**coffee & climate**  
*enabling effective response*



LAVAZZA

Löfbergs



Paulig



**Löfbergs**  
KÄFFEROSTERIER







20151125 Tanzania  
FFS session Mwika, Kikozi Kazi





20151125 Tanzania  
FFS session Mwika, Kikozi Kazi













# **Certification programs & development projects improves the economic, social and environmental conditions**

- **Help to organize**
- **Education & Training**
- **Access to the market**
- **Access to finance**
- **Access to plants**
- **Access to process equipment**
- **Access to warehouses**
- **Infrastructure, schools, hospitals, etc**

# What we want from donors

As a company, we have limited resources and need to focus on core business.

Examples that would facilitate:

- The same application form and follow-up from all donors.
- Change the rule private partner contribution 50%, it is a holdback!
- Joint application from the umbrella organization.
- Help with upscaling projects.