



International
Labour
Organization

Small matters !

ILO update. DCED annual meeting 2022

Merten Sievers

SME unit

ILO

sievers@ilo.org



Contents

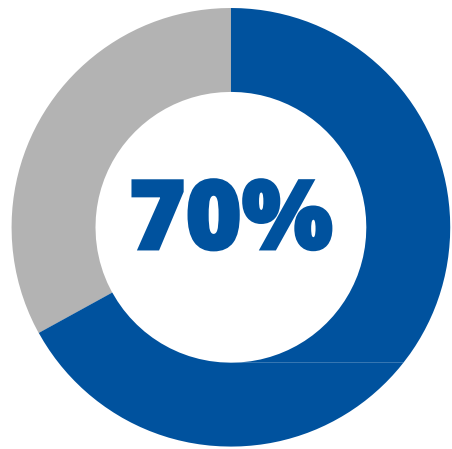
Who we are

- 1. Enabling Business Environment**
- 2. Enterprise Formalization**
- 3. Women Entrepreneurship Development**
- 4. Productivity and working conditions**
- 5. BDS and Entrepreneurship Ecosystems**
- 6. Market Systems Development**
- 7. Going Green**

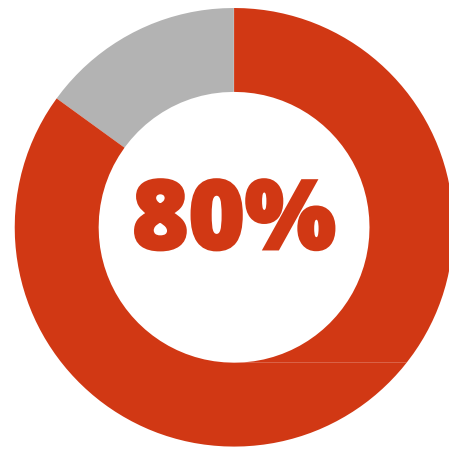


SME: Who we are and what we do?

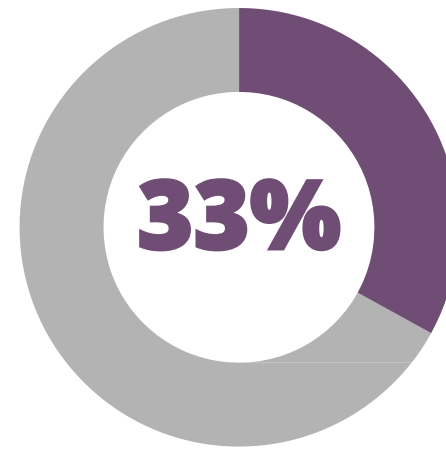
Mission : *To support the self-employed, micro, small and medium sized enterprises to start and grow sustainably creating more and better jobs*



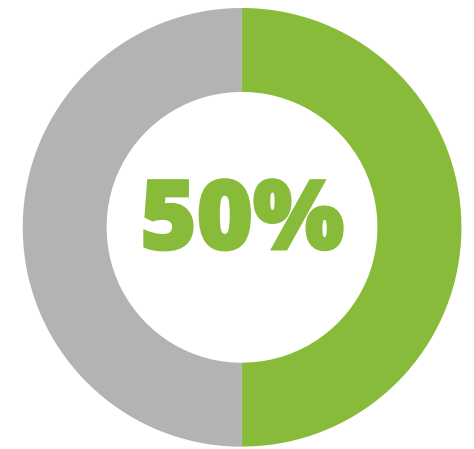
Small economic units provide more than two thirds of all jobs



Are informal economic units



are less productive than large firms

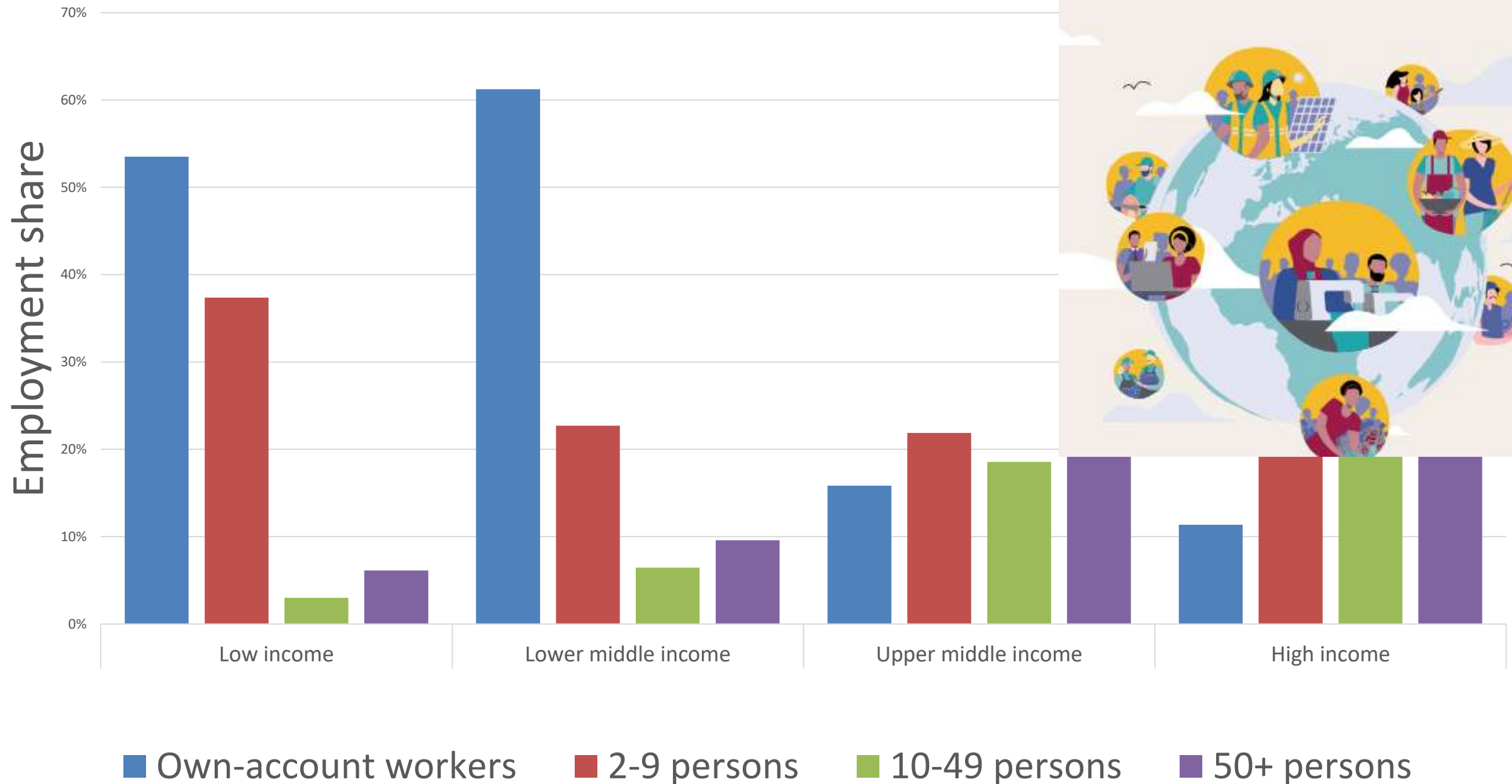


pay 50% less than large firms

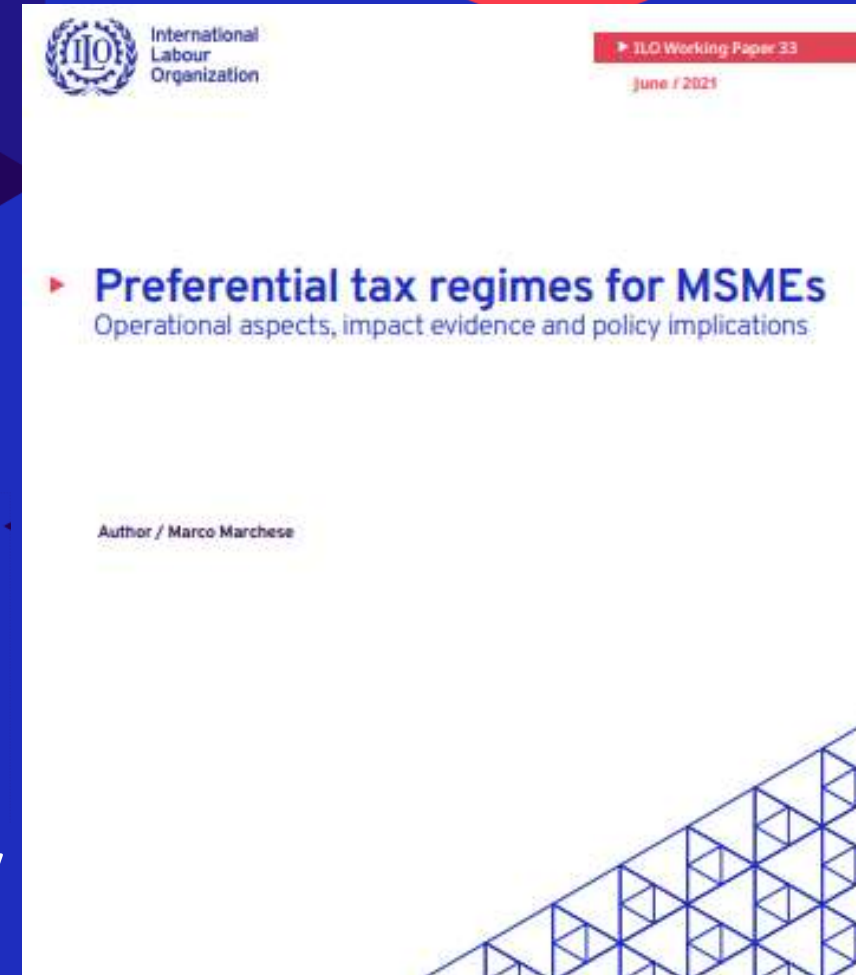
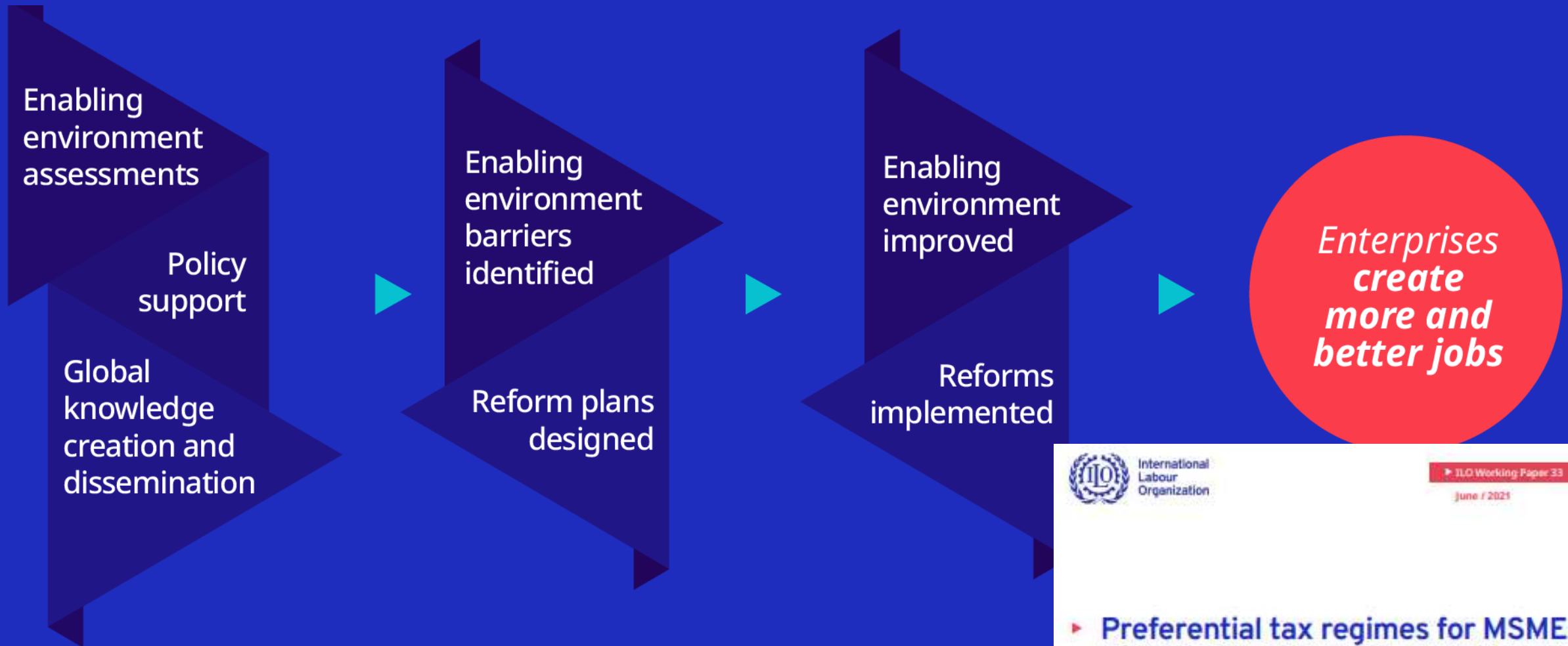
Delivery : A team of 150 professionals in the field and at HQ delivering six product lines supporting (green) SME development



Employment in “small economic units”



1. Enabling Environment for Sustainable Enterprises



Comprehensive



Inclusive

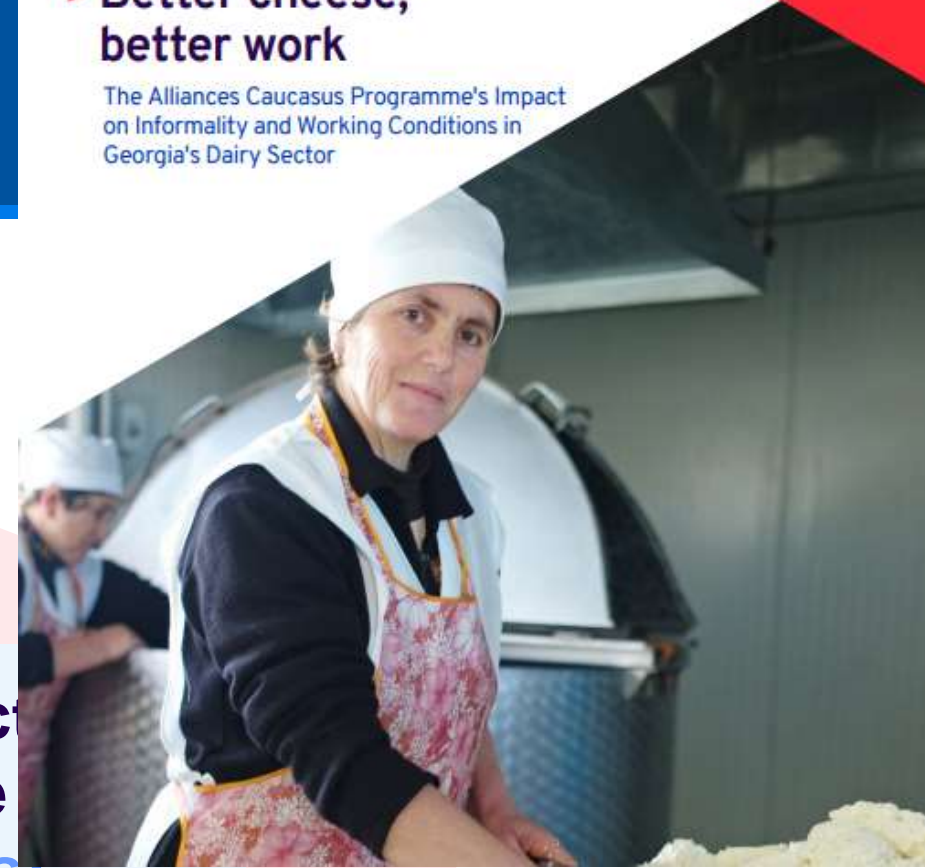


Participatory

2. Enterprise Formalization

► **Better cheese, better work**

The Alliances Caucasus Programme's Impact on Informality and Working Conditions in Georgia's Dairy Sector



The Approach

Dialogue & Voice

1. Make it easy to register and comply
(simplified procedures)

2. Make it attractive to formalize
(incentives)

3. Make it feasible to formalize
(productivity)

4. Make it less attractive to be informal
(enforcement)

3. Women's Entrepreneurship Development



Gender sensitive business management training

Business service provision for women entrepreneurs

Policy dialogue on women's entrepreneurship promotion



An organisational assessment for gender-responsive business development support.

What is WE Check?

WE Check is an institutional self-assessment tool that guides organisations providing financial and non-financial business support to conduct a self-assessment of the extent to which they target and serve women entrepreneurs, as a means to improve their performance and enhance their impact and sustainability. With the findings of this assessment, WE Check supports organisations to develop and pilot an evidence-based action plan.

WE Check focuses on three key assessment areas:

- 1. Clients and Outreach:** How well does the BDSP know, target and reach its clients?
- 2. Products and Services:** How well do the BDSP's products/services meet the needs of entrepreneurs?
- 3. Strategy and Operations:** Does the BDSP commit to gender equality and gender mainstreaming?



Women entrepreneurs in South Africa in male-dominated construction sector.

The WE Check Process

The WE Check process is a three-step process that takes between 6 and 12 months to complete. It is carried out by an internal team comprised of a diverse group of staff members of the organisation and is led by the organisation's senior management. The ILO and an external facilitator who is familiar with WE Check provide guidance and support throughout the process.

- Step 1: Preparation**
 - Engage senior management
 - Define objectives
 - Select team and facilitator
 - Team Building Workshop
 - Develop WE Check Plan
 - Communicate WE Check Plan
- Step 2: Self Assessment**
 - Collect data
 - Analyse data
 - Data Analysis Workshop
 - Develop WE Check Action Report
 - Validation Workshop
- Step 3: Pilot and Evaluation**
 - Implement pilot activities
 - Monitor pilot activities
 - Compile lessons learned
 - Review WE Check Action Report
 - Prepare for certification



250+

Certified Trainers



75+

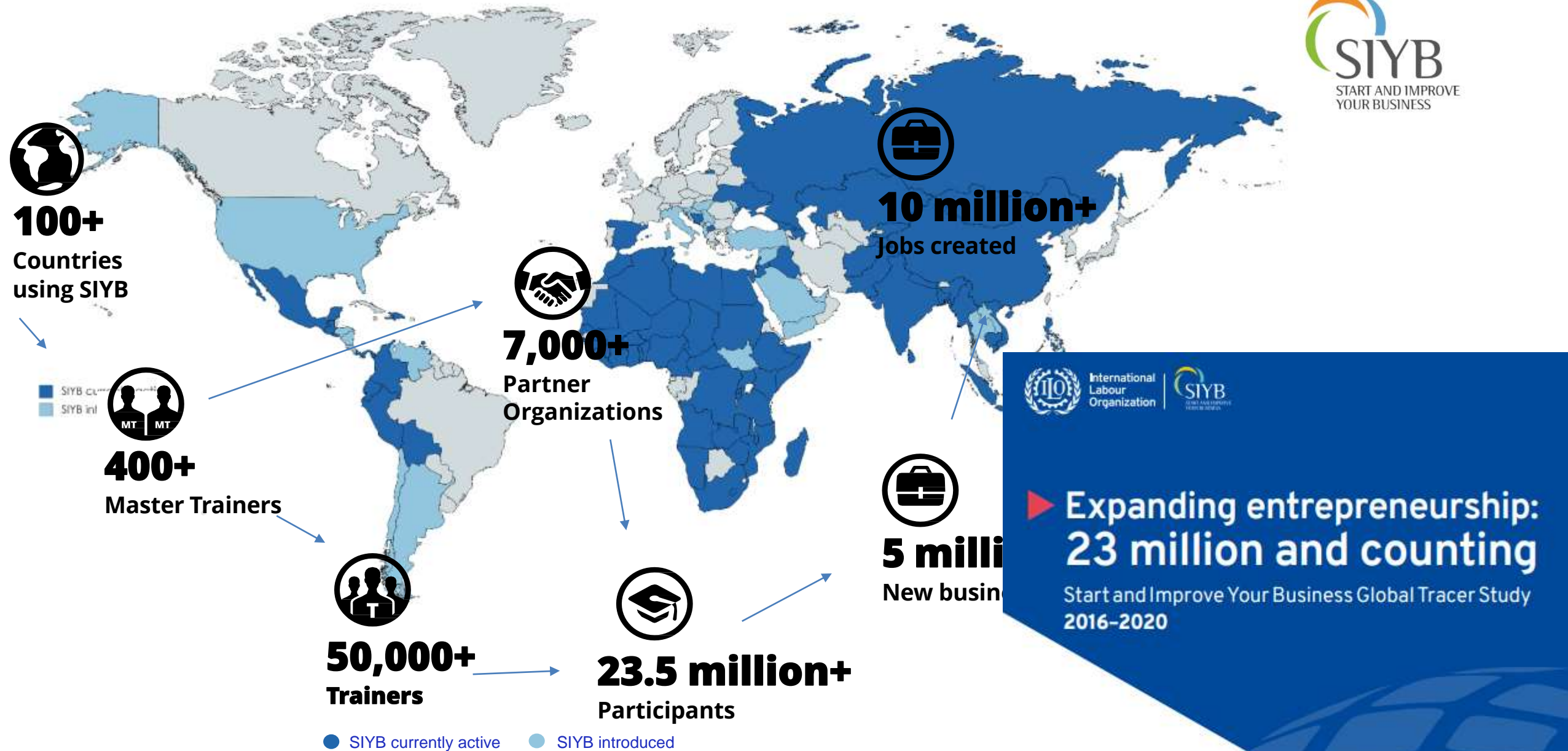
Service Providers



1 million+

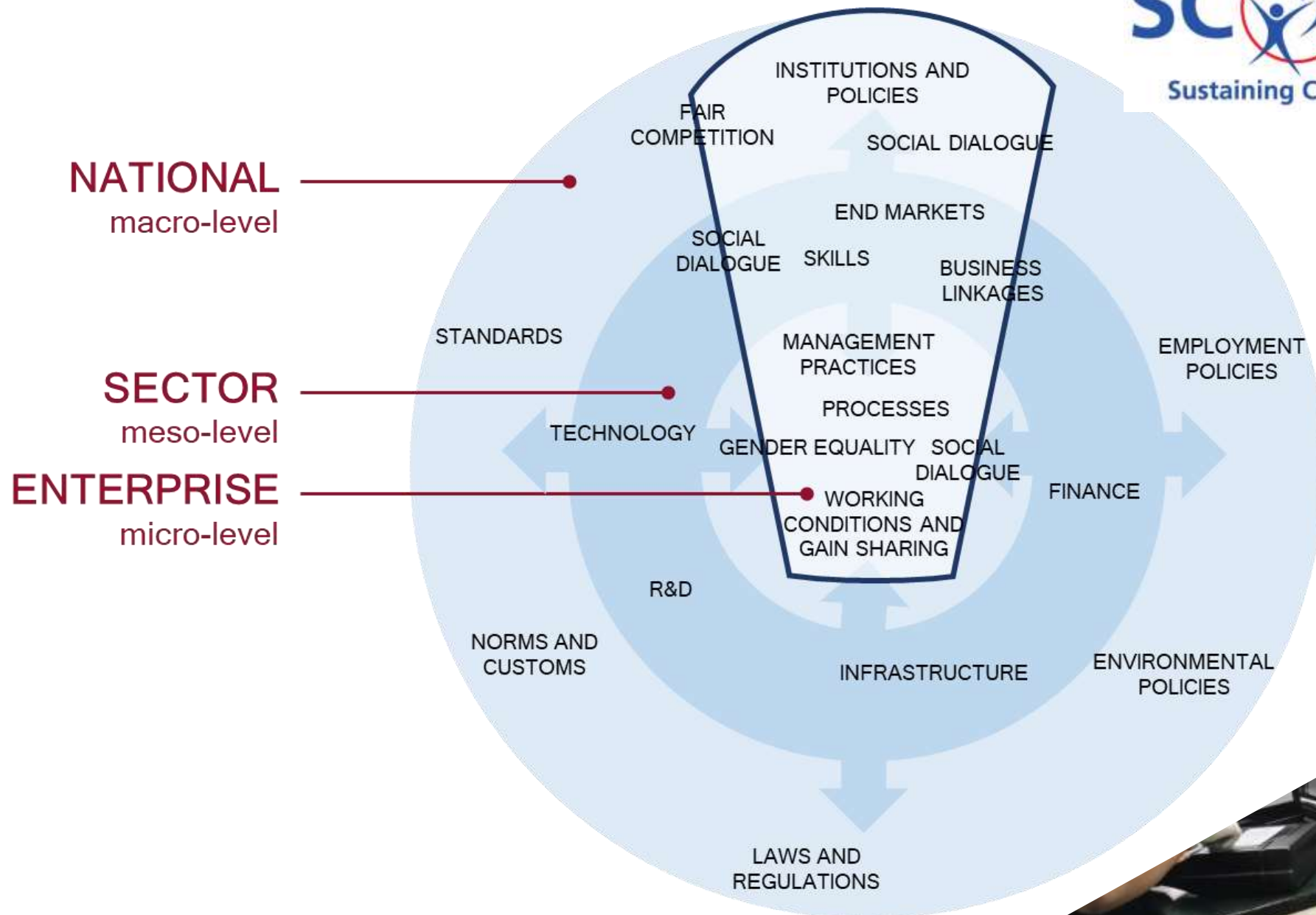
Women

4. Entrepreneurship and SIYB ⁸



NEW: Entrepreneurship Eco-systems and “Digitalize Your Business” - DYB

5. Complex problems require holistic solutions: Productivity Ecosystems



6. Market Systems and Decent Work

2010

2015

2020

2022

EnterGrowth | Value Chain Development with a MSD approach in the ILO

Consolidation and expansion of MSD for Decent Work

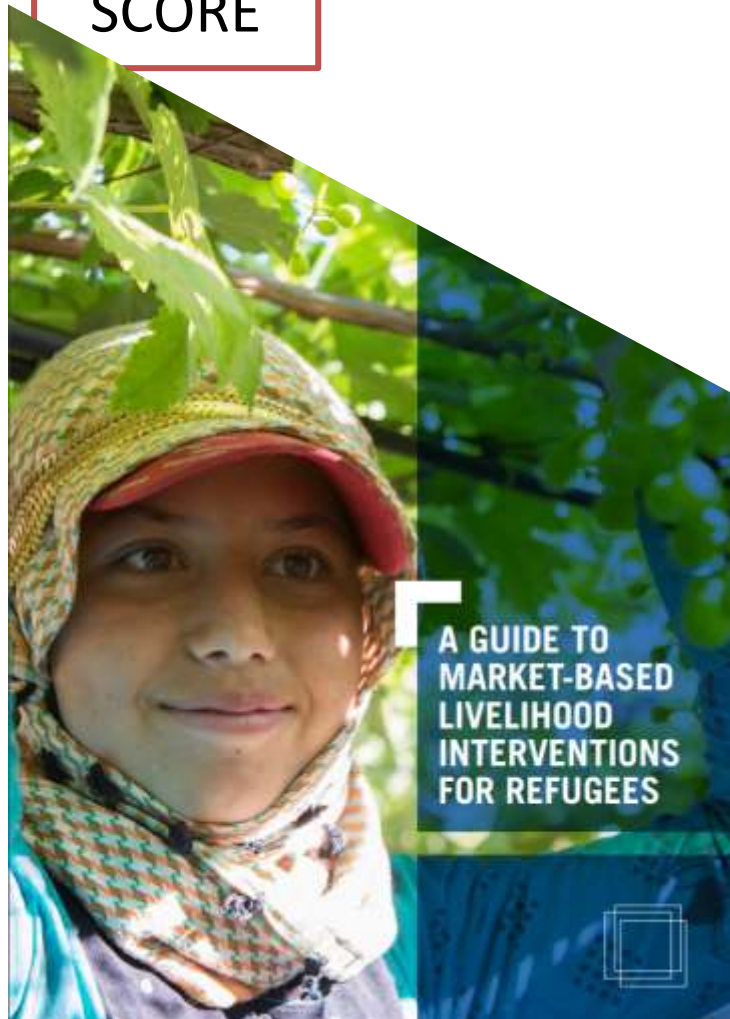
Approach to inclusive Market Systems ILO-UNHCR

SIYB/WED

Entrepreneurship Ecosystems

SCORE

Productivity Ecosystems



Trade4Jobs
Creating Decent Jobs through Regional Trade
A Project Concept Note

Executive Summary
The aim of this proposed *International Labour Organization (ILO) and International Trade Centre (ITC)* joint programme is to create decent jobs and build more resilient value chains by supporting MSMEs to become more competitive, have a stronger understanding of decent work, and increase their participation in regional trade.

Trade4Jobs is a direct response to the challenges posed by COVID-19, and the potential to put the post-pandemic recovery on a more inclusive trajectory by integrating a decent work focus into regional trade promotion. The programme brings together the unique strengths of ITC and ILO in decent job creation, MSME development, and trade to maximise impact by linking decent work and trade promotion.

The programme will support at least 5,000 MSMEs and improve at least 30,000 jobs in key areas of decent work, with over 50% of ultimate beneficiaries being women and 30% youth, in up to 4 countries in high-potential regions, likely within Sub-Saharan Africa.



1 The Decent Jobs Challenge and the Regional Trade Opportunity

The Sustainable Development Goal (SDG) 8 calls for the promotion of sustained, inclusive and sustainable economic growth, full and productive employment and decent work for all. However, progress towards this goal has been stalling and some achievements have even reversed due to the COVID-19 pandemic. Not only have many jobs been lost, pre-existing decent work deficits are dampening the prospects of a sustainable recovery in many regions. At the current pace, many countries will not achieve their targets under SDG 8.

www.ilo.org/sci

7. Going Green

Our future depends on a just transition to a carbon- and resource efficient economy

Green Jobs Assessment Reports: GAIN

PAGE: Partnership for a Green Economy – Ghana, Colombia

Greening SME operations



▶ **Market Systems Development and the Environment: A Strategic and Operational Guidance Note**

Find out more about the Lab:

- Website: www.ilo.org/thelab
- Email: thelab@ilo.org
- Twitter: [@ILOTheLab](https://twitter.com/ILOLTheLab)

By Isaac Cowan-Gore
December 2020



**TO CREATE MORE
AND BETTER JOBS**



**A SYSTEMIC
APPROACH YOU MUST USE**